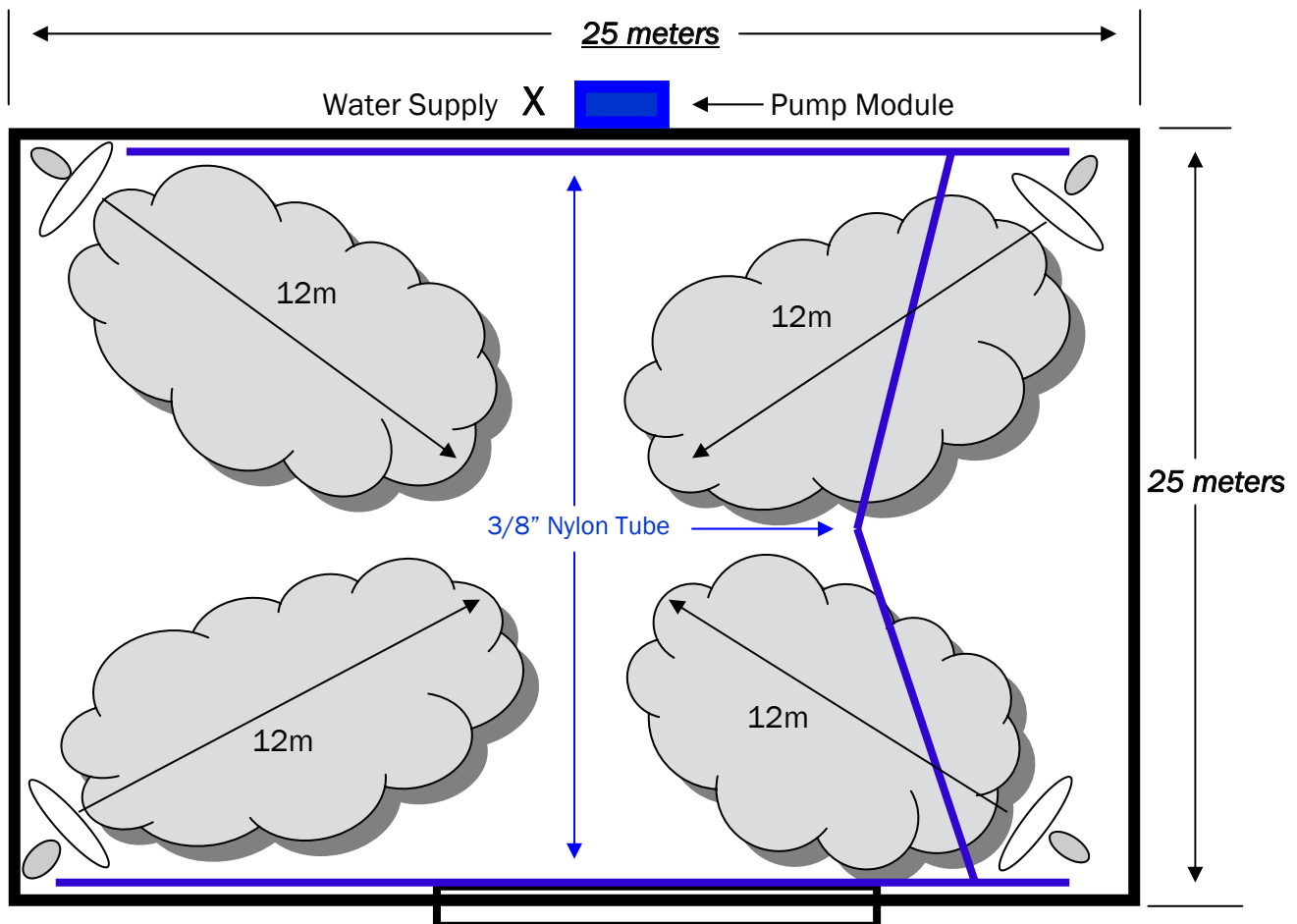
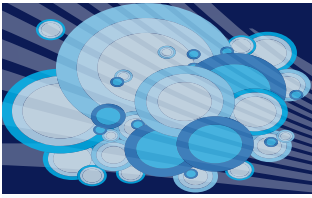


Installation Example

4 Fan System. Typical workshop installation.

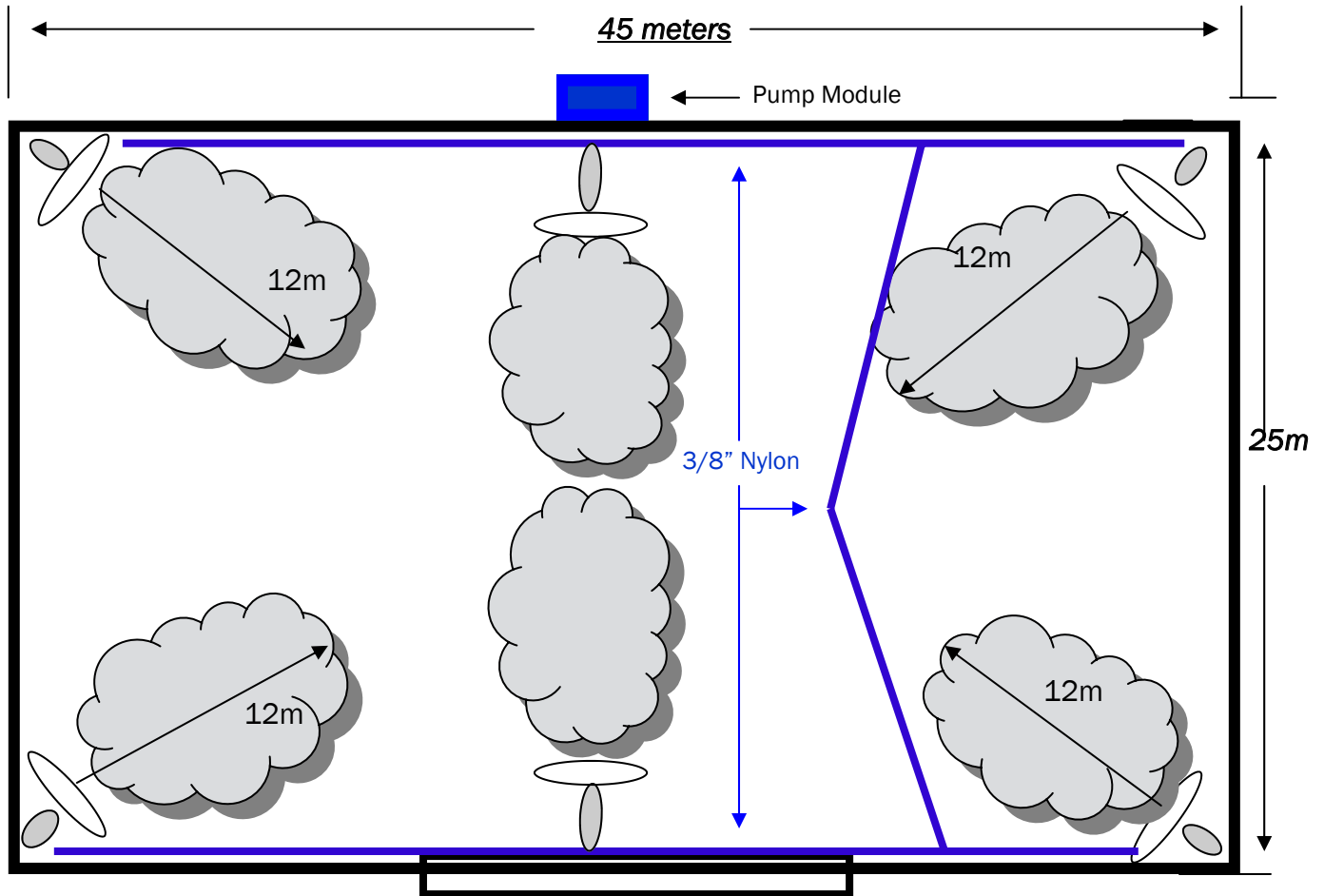


1	Oz50C Pump Module
4	Ozmist 750mm Wall Mount Fans
4	6 Nozzle Stainless Steel Fan Rings
75m	3/8" Nylon Tube
4	1/4"MI x3/8" Tube Unions
3	3/8" Tube Tee
4	3/8" Elbows
40	3/8" Nylon insert Tube saddles



Installation Example

6 Fan System. Typical workshop installation.



1	Oz50ci Industrial Pump Module
6	Ozmist 750mm Wall Mount Fans
6	6 Nozzle Stainless Steel Fan Rings
100m	3/8" Nylon Tube
2	3/8" x 3/8" x 1/4" Centre Tee
2	14" Fl x 1/4" Flare Connector
4	1/4" MI x 3/8" Tube Unions
3	3/8" Tube Tee
4	3/8" Elbows
60	3/8" Nylon insert Tube saddles