

# M20AU USER MANUAL

Gen 2

# KNOW YOUR MIST CANNON

## INTRODUCTION TO THE M20AU MIST CANNON:

WELCOME TO THE USER MANUAL FOR THE M20AU MIST CANNON, YOUR ESSENTIAL SOLUTION FOR DUST SUPPRESSION IN MINING, CONSTRUCTION, DEMOLITION, AND TRANSFER STATION WORKSITES. AS GOVERNMENTS TIGHTEN REGULATIONS ON DUST POLLUTION, OUR HIGH-POWERED MIST CANNON BECOMES A CRUCIAL TOOL FOR MAINTAINING COMPLIANCE AND ENSURING A SAFE WORKING ENVIRONMENT. DESIGNED AS AN ALL-IN-ONE SOLUTION, THE M20AU DELIVERS EXCEPTIONAL PERFORMANCE WITH ITS ABILITY TO THROW MIST UP TO 20 METERS, SWIFTLY SUPPRESSING DUST IN SMALL AREAS.

## KEY FEATURES AND VERSATILITY:

THE M20AU MIST CANNON IS ENGINEERED TO OFFER SUPERIOR FUNCTIONALITY AND EASE OF USE. WITH ITS FOUR SOLID RUBBER NO-FLAT WHEELS, THIS LIGHTWEIGHT CANNON CAN BE EFFORTLESSLY MOVED AND POSITIONED AROUND THE WORKSITE, ENABLING YOU TO TARGET SPECIFIC AREAS WITH PRECISION. ITS FIXED POSITION PROVIDES STABILITY, WHILE THE VERTICAL TILT FEATURE ALLOWS YOU TO REACH EVEN THE MOST CHALLENGING SPACES. EQUIPPED WITH OUR HIGH-PRESSURE MIST PUMP, THE M20AU ENSURES COMPLETE AND CONSISTENT MIST COVERAGE, EFFECTIVELY NEUTRALIZING DUST PARTICLES AND IMPROVING AIR QUALITY.

## DUAL FUNCTIONALITY AND COST-EFFECTIVENESS:

ONE OF THE STANDOUT FEATURES OF THE M20AU MIST CANNON IS ITS VERSATILITY. NOT ONLY DOES IT EXCEL IN DUST SUPPRESSION, BUT IT ALSO SERVES AS AN EFFICIENT COOLING SOLUTION FOR WORKSITES. THE FINE MIST GENERATED BY THE CANNON CAN REDUCE AIR TEMPERATURES BY UP TO 10 DEGREES, PROVIDING RELIEF FOR WORKERS DURING HOT AND HUMID CONDITIONS. MOREOVER, THE M20AU IS DESIGNED FOR COST-EFFECTIVENESS, OFFERING SIMPLE OPERATION AND LOW MAINTENANCE REQUIREMENTS. WITH ITS AUSTRALIAN-MADE QUALITY AND ROBUST STAINLESS STEEL CONSTRUCTION, THIS MIST CANNON IS THE PEOPLE'S CHOICE FOR A RELIABLE AND AFFORDABLE DUST CONTROL SOLUTION.

## TRANSPORTATION AND TECHNICAL SPECIFICATIONS:

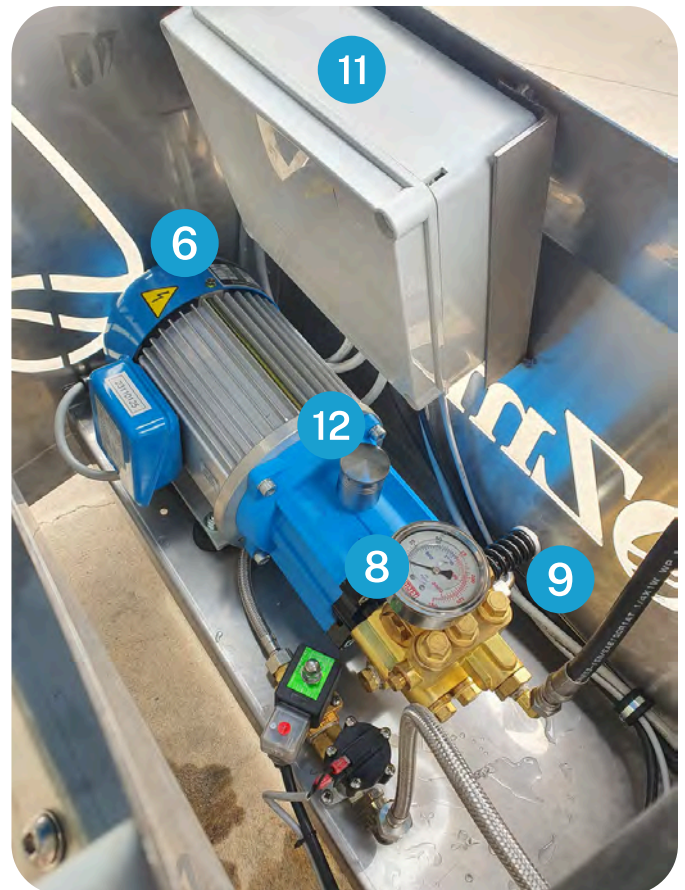
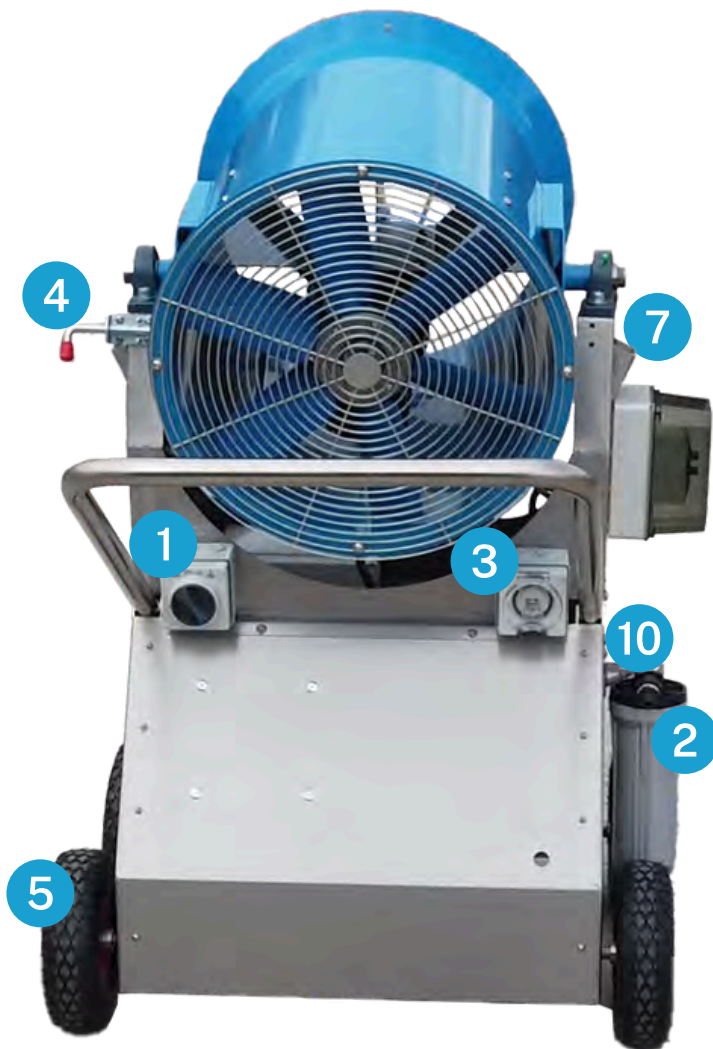
FOR EASE OF TRANSPORTATION, THE M20AU MIST CANNON IS DESIGNED TO FIT COMFORTABLY ON A STANDARD 1.2M X 1.2M PALLET. ADDITIONALLY, USERS HAVE THE FLEXIBILITY TO RUN THE FAN AND MIST FUNCTIONS SEPARATELY, ALLOWING FOR EFFICIENT OPERATION BASED ON SPECIFIC SITE REQUIREMENTS. WITH DIMENSIONS OF 740MM IN LENGTH, 890MM IN WIDTH, AND 1330MM IN HEIGHT, THE M20AU OFFERS A COMPACT YET POWERFUL SOLUTION FOR YOUR DUST SUPPRESSION NEEDS. WHETHER TARGETING SPECIFIC DUST POINTS OR COVERING A LARGER AREA, OUR MISTING DUST SUPPRESSION SOLUTIONS ARE PROVEN TO BE HIGHLY EFFECTIVE IN CONTROLLING FUGITIVE DUST AND IMPROVING WORKSITE CONDITIONS.



\*SHOWN WITH AN OPTIONAL CYCLE TIMER

ALWAYS ENSURE THAT WATER IS CONNECTED AND ON BEFORE USE

---



- 1. MAIN OPERATION SWITCH
- 2. WATER CONNECTION
- 3. POWER CONNECTION
- 4. CANNON TILT (3 POSITION OPTIONS)
- 5. NO-FLAT TYRES
- 6. HIGH-PRESSURE PUMP

- 7. CRANE LIFT POINT
- 8. HIGH-PRESSURE GAUGE
- 9. PRESSURE ADJUSTMENT VALVE
- 10. WATER FILTER HOUSING
- 11. ELECTRICAL BOX
- 12. OIL RESERVOIR & FILL

# KNOW YOUR MIST CANNON

## BEFORE USE CHECKLIST

BEFORE STARTING YOUR M20AU MIST CANNON FOR THE FIRST TIME, IT'S ESSENTIAL TO ENSURE THAT:

1. **FAN CLEARANCE:** VERIFY THAT THE FAN IS CLEAR OF ANY OBSTRUCTIONS THAT MIGHT IMPEDE ITS ROTATION OR EFFECTIVENESS.
2. **NOZZLE INSPECTION:** CONFIRM THAT ALL 12 NOZZLES ARE SECURELY INSTALLED AND UNDAMAGED. DAMAGED NOZZLES CAN AFFECT MIST DISTRIBUTION AND EFFICIENCY.
3. **WATER AND POWER CONNECTION:** ENSURE THAT BOTH THE WATER AND POWER PLUGS ARE FREE OF DEBRIS OR ANY OTHER OBSTRUCTIONS THAT MIGHT AFFECT THEIR CONNECTIVITY.
4. **OIL LEVEL CHECK:** CHECK THE OIL LEVEL IN THE PRESSURE PUMP TO ENSURE IT'S AT THE APPROPRIATE LEVEL FOR OPTIMAL PERFORMANCE.

FOLLOW THESE STEPS TO SET UP THE M20AU FOR OPERATION:

1. **WATER CONNECTION:** CONNECT THE M20AU TO A SUITABLE WATER SOURCE THE M20AU HAS A FLOW RATE OF APPROXIMATELY 3.69L/MIN. ENSURE THE WATER SOURCE IS TURNED ON AND PROVIDES ADEQUATE PRESSURE FOR MIST GENERATION.
2. **POWER CONNECTION:** CONNECT THE M20AU TO A 15A, 240V POWER SOURCE TO POWER THE UNIT.
3. **FAN AND PITCH ADJUSTMENT:** POSITION THE FAN WHERE IT'S REQUIRED FOR MIST DISPERSION. ADJUST THE PITCH ANGLE OF THE CANNON AS NEEDED TO ACHIEVE THE DESIRED TRAJECTORY OF THE MIST. MULTIPLE HOLES ARE DRILLED IN THE CASING, BUT ONLY THE LOWER THREE ARE USEABLE DUE TO THE CASING CONTACTING THE CHASSIS.
4. **POWER ON:** TURN ON THE M20AU BY TOGGING THE MAIN SWITCH TO THE "ON" POSITION.

FINISHED USING THE M20AU:

1. **POWER OFF:** TURN OFF THE M20AU BY SWITCHING THE MAIN OPERATION SWITCH TO THE "OFF" POSITION.
2. **POWER AND WATER DISCONNECTION:** TURN OFF THE POWER SOURCE AND DISCONNECT THE M20AU FROM THE POWER OUTLET. SIMILARLY, TURN OFF THE WATER SOURCE AND DISCONNECT THE SUPPLY HOSE. NOTE: NEVER TURN OFF THE WATER SOURCE WHILE THE M20AU IS OPERATIONAL.
3. **STORAGE:** THE M20AU CAN NOW BE MOVED OR STORED AS NEEDED.

SERVICE INTERVALS FOR THE M20AU:

1. **HIGH-PRESSURE PUMP SERVICE:** THE HIGH-PRESSURE PUMP REQUIRES AN INITIAL SERVICE AFTER 50 HOURS OF USE, FOLLOWED BY SERVICING EVERY 250 HOURS THEREAFTER.
2. **FILTER MAINTENANCE:** CHECK THE SINGLE FILTER BEFORE EACH USE AND REPLACE IT AS NEEDED. THE FREQUENCY OF REPLACEMENT WILL DEPEND ON THE QUALITY OF THE WATER BEING USED.
3. **NOZZLE INSPECTION:** REGULARLY CHECK THE NOZZLES FOR ANY SIGNS OF WEAR OR DAMAGE. REPLACE THEM AS NECESSARY, CONSIDERING THAT THEIR CONDITION MAY VARY BASED ON THE QUALITY OF THE WATER BEING USED.

BY FOLLOWING THESE GUIDELINES, YOU CAN ENSURE THE OPTIMAL PERFORMANCE AND LONGEVITY OF YOUR M20AU MIST CANNON. IF YOU HAVE ANY FURTHER QUESTIONS OR REQUIRE ASSISTANCE, PLEASE REFER TO THE USER MANUAL OR CONTACT OUR CUSTOMER SUPPORT TEAM FOR ASSISTANCE.



# KNOW YOUR MIST CANNON

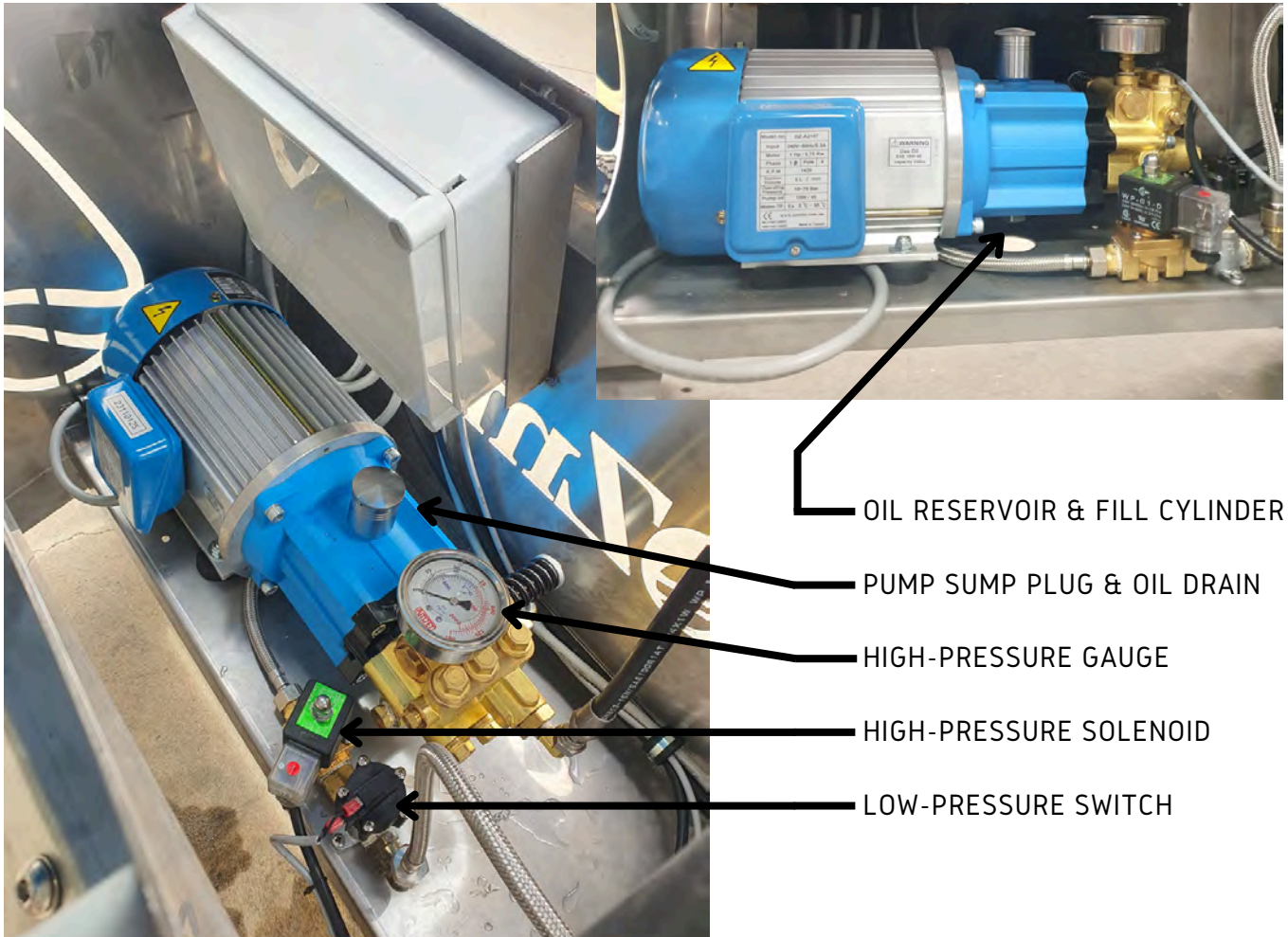
## CHANGING THE OIL

- POSITION THE M20AU SO THE BRASS OIL DRAIN PLUG ON THE UNDERSIDE OF THE PUMP UNIT CAN BE ACCESSED.
- PLACE A SUITABLE CONTAINER UNDER THE PUMP TO CATCH THE OIL.
- REMOVE THE DRAIN PLUG AND OIL SHOULD FLOW FROM THE PUMP INTO YOUR CONTAINER, WHILE DRAINING REMOVE THE CAP FROM THE TOP OF THE SILVER CANISTER AND STORE SOMEPLACE SAFE.
- ONCE THE PUMP HAS DRAINED ALL ITS OIL YOU CAN REPLACE THE DRAIN PLUG AND TIGHTEN IT FIRMLY.
- PROCEED TO FILL THE PUMP FROM THE SILVER CANISTER POURING OIL VERY SLOWLY, ALLOWING AIR TO DISSIPATE. POUR UNTIL THERE IS OIL HALFWAY UP THE SILVER CANISTER.

IT IS GOOD PRACTICE TO RUN THE PUMP FOR A SHORT AMOUNT OF TIME AFTER AN OIL CHANGE. ONCE RUN FOR A SHORT TIME CHECK THE OIL LEVEL AGAIN.

ONLY USE 10W - 40 OR 10W - 50 FULLY SYNTHETIC OIL IN OUR PUMPS.

## HIGH-PRESSURE PUMP COMPONENTS



# MAKE SURE THAT THE POWER CONNECTION IS FREE OF OBSTRUCTION BEFORE USE

## TROUBLESHOOTING

### Q/- NOTHING IS HAPPENING WHEN YOU TOGGLE THE ON/OFF SWITCH?

A/- REMOVE POWER AND CHECK THAT THE 5-PIN CONNECTORS FOR THE HIGH-PRESSURE PUMP AND THE FAN ARE FIRMLY CONNECTED INSIDE THE UNDERSIDE OF THE CONTACTOR BOX WHEN CONFIRMED, PLUG INTO POWER AND TRY AGAIN.

### Q/- THE FAN IS OPERATING AND I CAN HEAR THAT THE PUMP IS ON BUT THERE IS NO MIST COMING OUT OF THE NOZZLES?

A/- TURN THE MACHINE OFF AND CHECK THAT THE WATER SUPPLY IS CONNECTED SECURELY, THAT THERE ARE NO BLOCKAGES OR KINKS IN THE WATER HOSE AND THAT THE WATER SUPPLY IS ON.

### Q/- THE FAN IS OPERATING AND I STILL HAVE NO MIST, I HAVE FOLLOWED THE STEPS ABOVE. I CAN HEAR THAT THE NOZZLES ARE TRYING TO PRODUCE MIST.

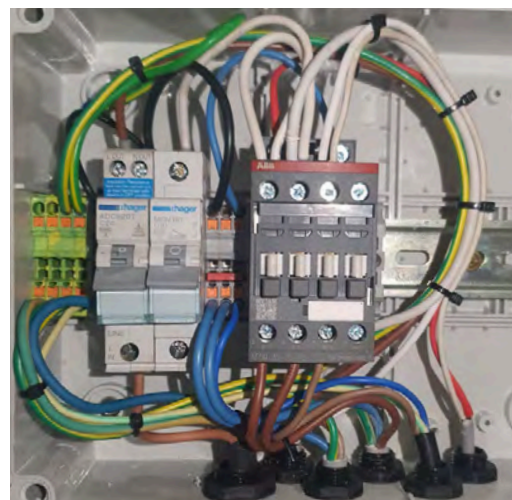
A/- THIS WILL MOST LIKELY BE CAUSED BY AN AIRLOCK, TO FIX THIS ALL YOU NEED TO DO IS REMOVE A SINGLE NOZZLE FROM THE MISTING RING WITH THE MACHINE OPERATING. THIS WILL BLEED ANY AIR FROM THE SYSTEM. ONCE THERE IS A CONSTANT STREAM OF WATER COMING FROM THE REMOVED NOZZLE HOLE. TURN OFF THE M20AU AND REINSTALL THE MIST NOZZLE. NOW THE MACHINE CAN BE TURNED ON AND THE MIST SHOULD START TO BUILD.

### Q/- NEITHER THE FAN NOR THE PUMP ARE OPERATING WHEN TURNED ON.

A/- CHECK THE QUALITY OF THE FILTER CARTRIDGE IN THE BLUE HOUSING THAT IS LOCATED IN THE CHASSIS. A FILTER SPANNER MAY BE REQUIRED TO REMOVE IT. THE FILTER CARTRIDGES ARE A 2.5" X 10" SIZE, 5-MICRON AND CAN BE PURCHASED FROM OZMIST OR MOST PLUMBING SUPPLY STORES. IF THE FILTER IS DIRTY OR DAMAGED, THIS WILL TRIGGER THE LOW-PRESSURE SWITCH AND SHUT DOWN THE MACHINE SO NO DAMAGE CAN BE CAUSED TO THE HIGH-PRESSURE PUMP.

### Q/- IS THERE A WAY TO RESET THE CIRCUIT BREAKERS FOR THE PUMP AND THE FAN.

A/- YES, FOR THE FOLLOWING EXERCISE PLEASE MAKE SURE THAT THE M20AU IS DISCONNECTED FROM ALL POWER SOURCES BEFORE CONTINUING. THE CIRCUIT BREAKER CAN BE FOUND WITHIN THE ELECTRICAL BOX LOCATED WITHIN THE CHASSIS. THERE ARE FOUR SCREWS THAT HOLD THE COVER OF THE BOX IN PLACE, THESE MUST BE UNDONE COMPLETELY, AND THE LID MAY REQUIRE GENTLE AND CAREFUL PRYING TO REMOVE.





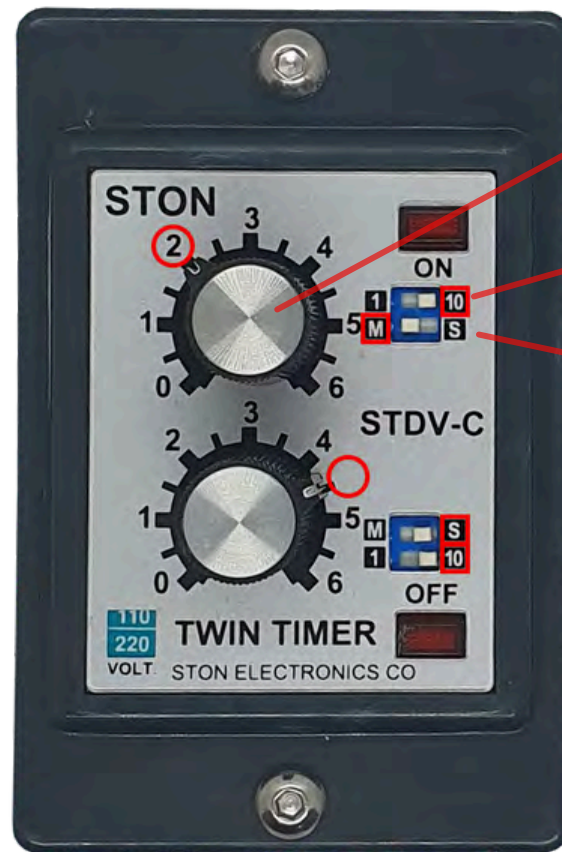
# SIMPLE SETUP

## ON-CYCLE

- DIAL SET TO 2
- UPPER SUB CONTROL SET TO 10
- LOWER SUB CONTROL SET TO MINUTES
- = SYSTEM IS SET TO RUN FOR 20 MINUTES

## OFF-CYCLE

- DIAL SET TO 4.5
- LOWER SUB CONTROL SET TO 10
- UPPER SUB CONTROL SET TO SECONDS
- = SYSTEM IS SET TO SLEEP FOR 45 SECONDS



THE CYCLE TIMER IS BEST  
USED IN SITUATIONS  
WHERE AIRFLOW IS  
LIMITED. CYCLING CANNON  
OPERATION WILL ELIMINATE  
OVER-MISTING THAT CAN  
LEAD TO VISUAL HAZARDS  
AND WETTING.

\*PLEASE NOTE THAT THE CYCLE TIMER IS AN ADDITIONAL ACCESSORY AND DOES NOT COME INSTALLED AS DEFAULT.

\*PLEASE NOTE THAT THERE MAY BE SLIGHT VARIATIONS BETWEEN THE IMAGES DEPICTED IN THIS MANUAL AND THE ACTUAL PRODUCT.

\*PLEASE NOTE THAT THE TIMER WILL ALWAYS START IN THE OFF CYCLE.